

AFTER

13 SEPTEMBER - 10 NOVEMBER 2013

# FIVE

FASHION FROM  
THE DARNELL  
COLLECTION

KIDS  
ART  
TRAIL

NEWCASTLE  
ART GALLERY

HOW TO:  
HAVE FUN IN  
THE GALLERY  
THIS SEASON



# AFTER FIVE

## FASHION FROM THE DARNELL COLLECTION

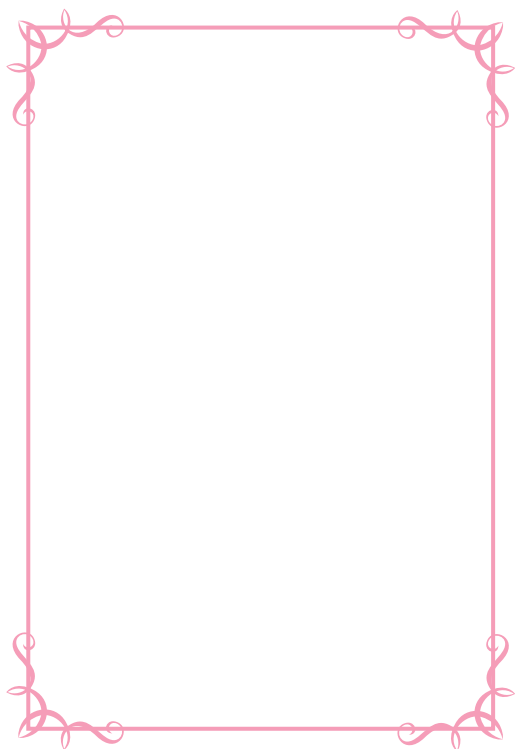
---

*After Five: Fashion from the Darnell Collection* is an exhibition that showcases fashion items such as clothing, shoes, bags and hats. The items in this exhibition were originally owned by Doris Darnell, who later gave them to her goddaughter Charlotte Smith.

The exhibition is called *After Five* because the items on display are pieces of fashion that women would have worn to special events held after five o'clock in the evening, such as parties, balls, theatre, red carpet events, discos and nightclubs.

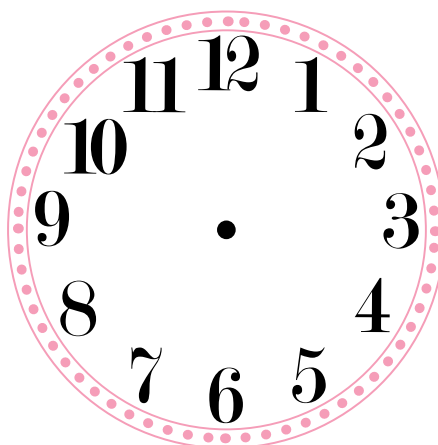
---

What outfit would you wear to a special *After Five* event? Make a drawing of that outfit below.



What time will your fun begin this evening?

Show us on this clock.



*After Five: Fashion from the Darnell Collection* shows some of the interesting ways that fashion has changed over the years.

Fabrics have changed, styles have become looser or tighter, hems longer and shorter.

One feature that has stayed on trend throughout historic changes in fashion is **pattern**.

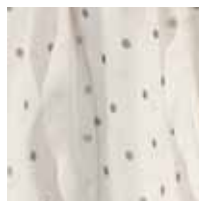
As you walk around the exhibition look for the many decorative and attractive patterns.

Patterns may be elaborate and decorative or soft and subtle. Blossoming florals, spots, stripes or tartan, graphic and digital prints, swirly painterly prints, bold geometrically shaped prints or jungle inspired animal prints.

---

Look for the dresses featuring each of these patterns.

Use the captions on the walls to find out when each dress was made, and draw a line connecting each pattern to its correct date.



1951

1985

1960

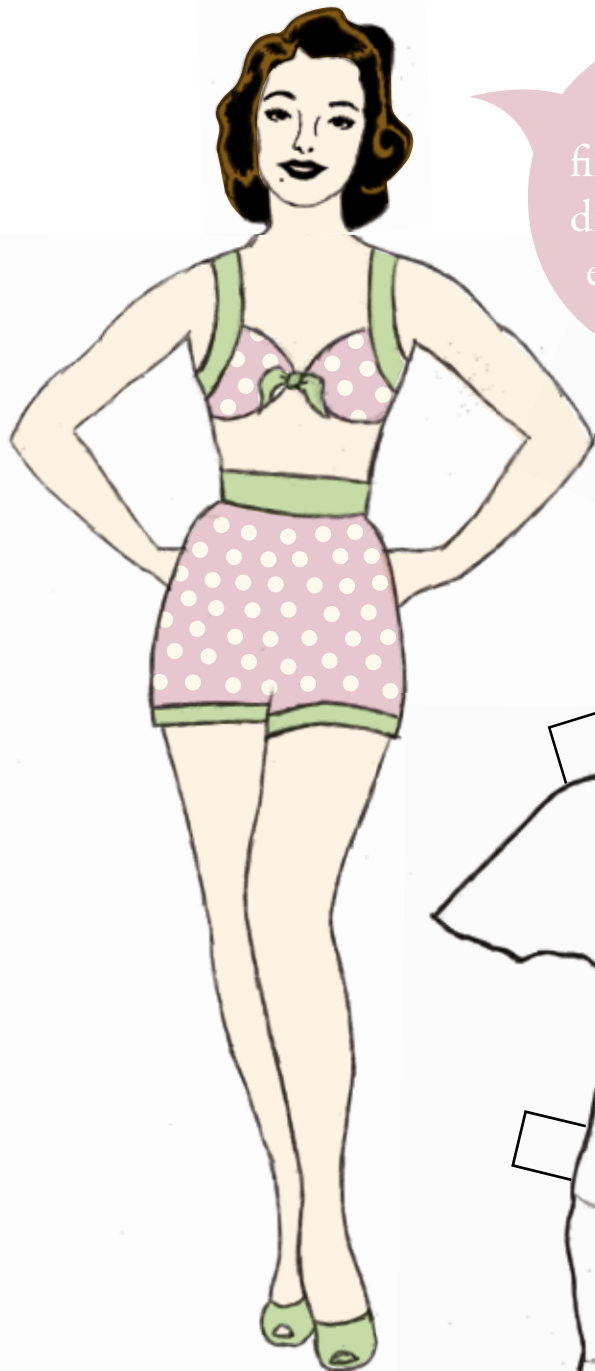
1938

1970

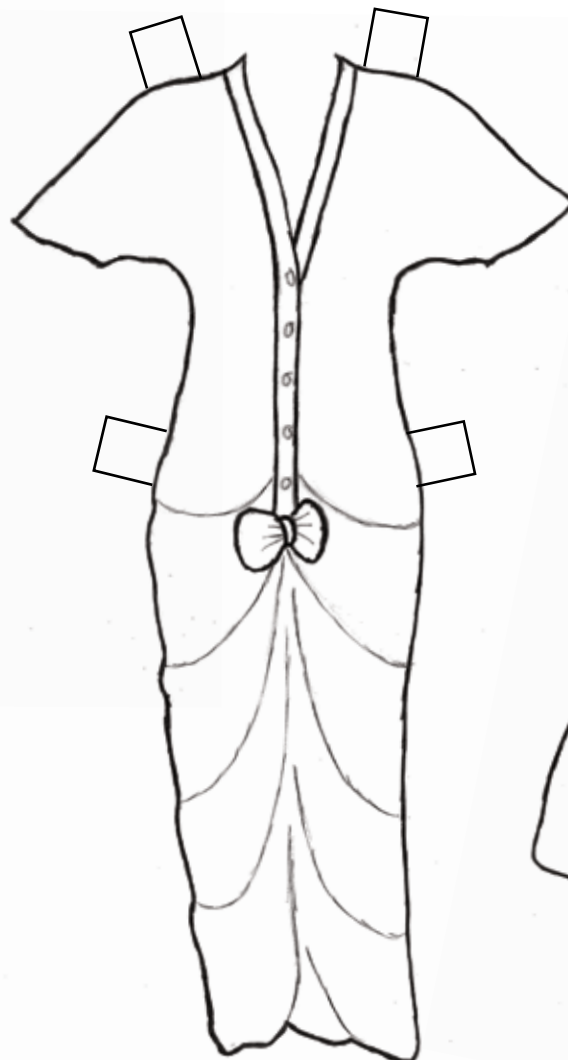
1925

# PRUE

Meet Prue. Prue enjoys going to art galleries and playing tennis. Prue's clothes are a little plain. Use coloured pencils to decorate them with interesting patterns. You might like to use spots, floral, lace or leopard print.



Can you find all of my dresses in the exhibition?

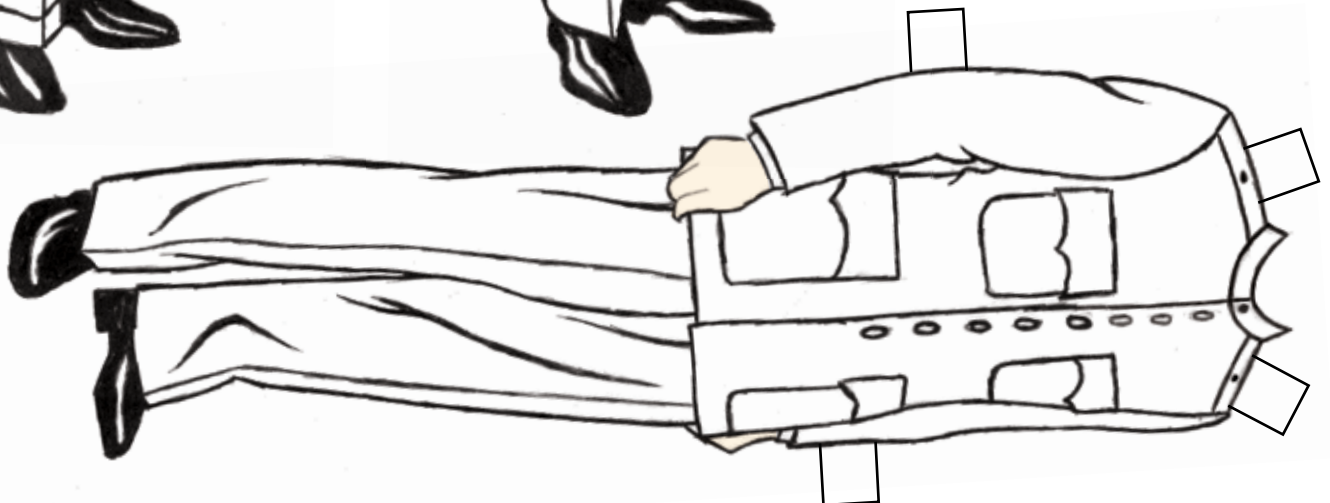
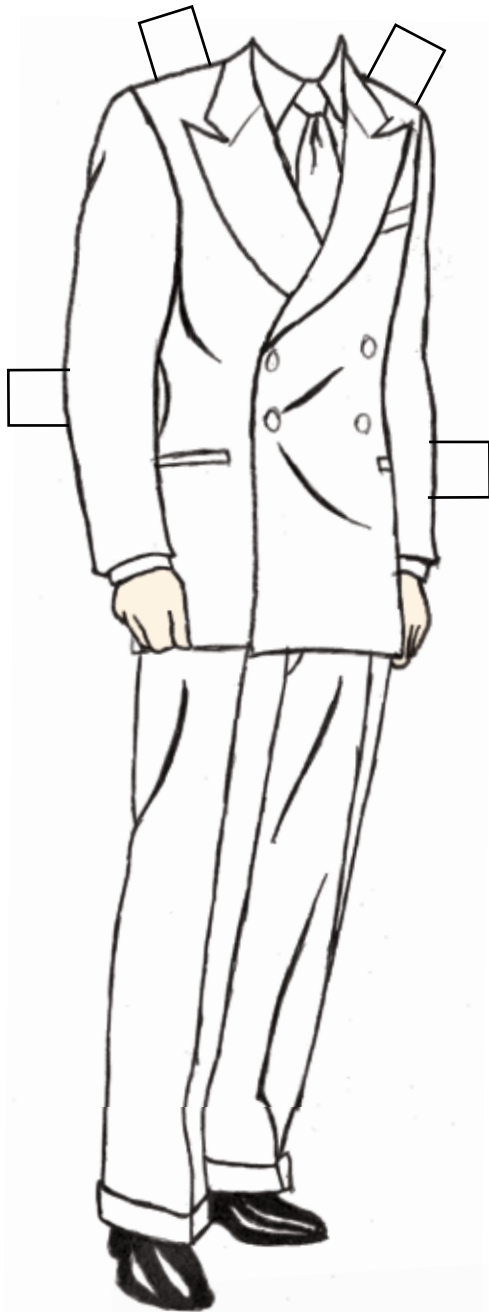


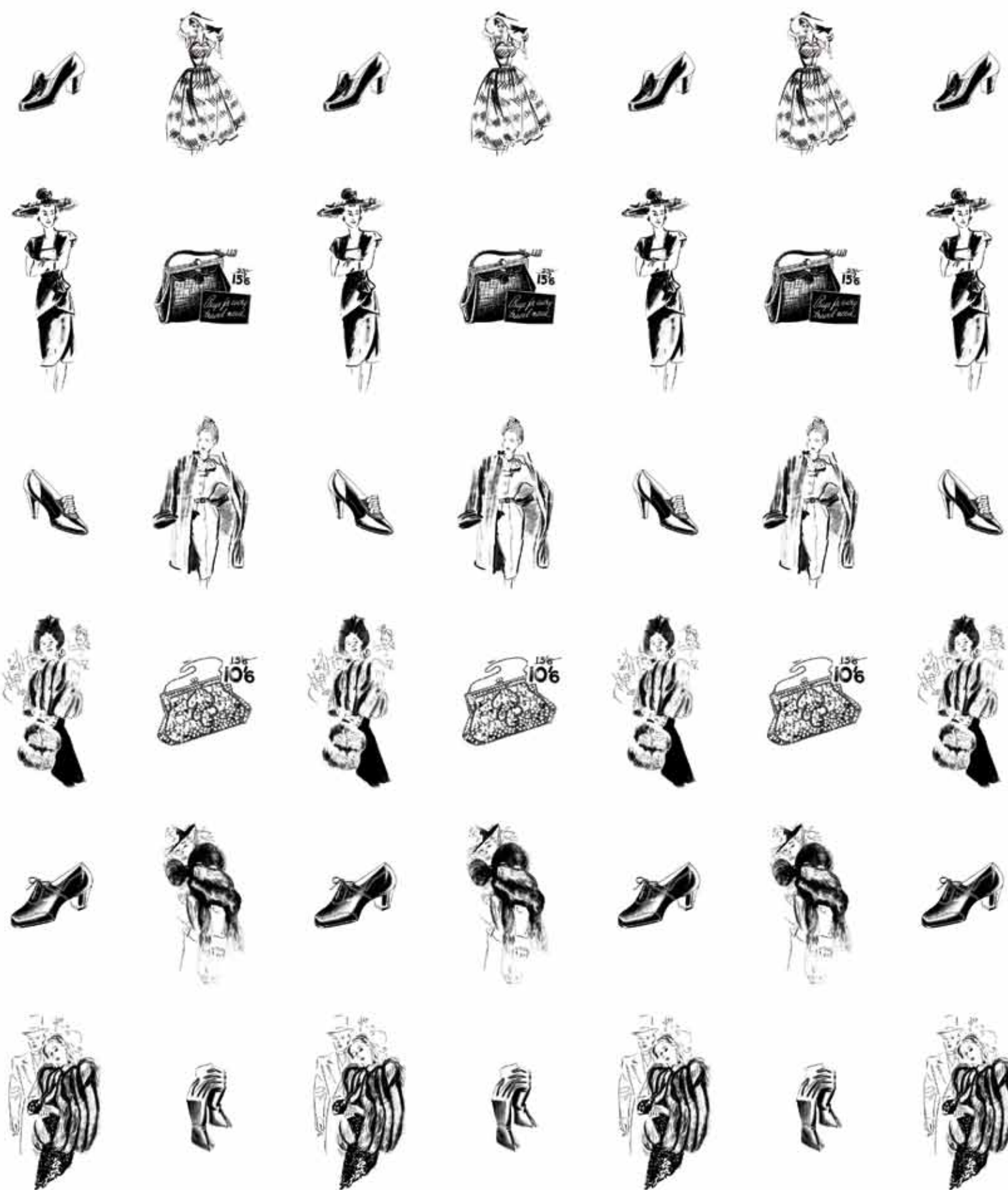


# RON

Meet Ron. Ron enjoys riding his Vespa and travelling. Ron's clothes are a little plain. Use coloured pencils to decorate them with interesting patterns. You might like to use stripes, tartan, tie-dye or houndstooth.

Did you know, that although not included in this exhibition there are also men's and children's clothes in the Darnell Collection?





A Hazelhurst Regional Gallery and Arts Centre touring exhibition

**Hazelhurst**  
A facility of Sutherland Shire Council

**Westfield** KOTARA

  
**PEPPERTREE**  
WINES

**HERALD**

 1233 ABC  
Newcastle

**NEWCASTLE**  
ART GALLERY  
FOUNDATION

**NEWCASTLE**  
ART GALLERY  
SOCIETY

  
The City of  
Newcastle

**NEWCASTLE ART GALLERY** Laman Street Newcastle 2300 | 02 4974 5100 | [www.nag.org.au](http://www.nag.org.au)

Images above: Shirley Barton *Fashion illustrations* c1950 ink drawings on tracing paper. Jann Barton collection

Developed by Newcastle Art Gallery © 2013